

LORENZ

Seating » Benches



Collection: **Metalco**

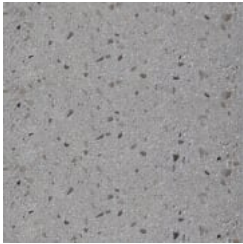
Designed by: **Massimo Tasca, Pio & Tito Toso, Mattia Li Pomi**



Precast Concrete
White Granite
Brushed



Precast Concrete
White Granite
Sandblasted



Precast Concrete
Grey Granite Brushed



Precast Concrete
Grey Granite
Sandblasted



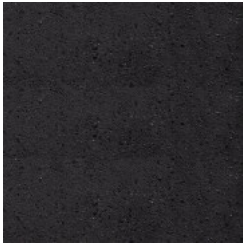
Precast Concrete
White Marble
Brushed



Precast Concrete
White Marble
Sandblasted



Precast Concrete
Black Marble
Brushed



Precast Concrete
Black Marble
Sandblasted



Hardwood Akoume
Varnished



Hardwood
Pigmented
Impregnation



Hardwood Untreated

LORENZ

Seating » Benches



Modular monolithic seating. Organic-shaped linear and curved modules made of precast concrete with stone aggregate paired with hardwood elements.

Description

Lorenz, designed by Massimo Tasca, Pio & Tito Toso, Mattia Li Pomi, is a stunning mix of organic curves, natural materials and textures with elegant modularity. This contemporary seating collection includes a linear bench and seat in 2 sizes each and a curved bench to allow for a huge array of compositions. Lorenz is designed to be paired with the Treeline collection for even greater flexibility. Made of precast concrete with a granite or marble aggregate paired with hardwood elements, the seating collection is both stylish and highly versatile to suit many public spaces.

Made In

Europe

LORENZ

Seating » Benches

Dimensions	<div>Short bench 1000mmW x 750mmD x 460mmH</div> <div>Long bench 2200mmW x 750D x 460mmH</div> <div>Short seat 1000mmW x 750mmD x 795mmH Seat height: 460mm</div> <div>Long seat 2200mmW x 750D x 795mmH Seat height: 460mm</div> <div>120° curved bench 2070mmW x 1200mmD x 460mmH</div>
Weight	<div>LORE.C.GN: Lorenz 120° Curved Bench - 1480kg</div> <div>Internal Direction LORE.1000.GN.IN: 1000mmL Lorenz Bench - 707kg LORE.2200.GN.IN: 2200mmL Lorenz Bench - 1560kg LORE.S.1000.GN.IN: 1000mmL Lorenz Seat - 815kg LORE.S.2200.GN.IN: 2200mmL Lorenz Seat - 1780kg</div> <div>External Direction LORE.1000.GN.EX: 1000mmL Lorenz Bench - 707kg LORE.2200.GN.EX: 2200mmL Lorenz Bench - 1560kg LORE.S.1000.GN.EX: 1000mmL Lorenz Seat - 815kg LORE.S.2200.GN.EX: 2200mmL Lorenz Seat - 1780kg</div>
Batten Type	<div>Hardwood</div> <div>Exotic hardwood - oiled</div>
Frame	<div>Body Precast concrete with stone aggregate PDM - Reconstituted Stone 4 options: White Granite, Grey Granite, White Marble, Black Marble</div> <div>Body Finish Sandblasted</div> <div>Optional Clear anti-graffiti coating (to the concrete plane)</div>
Warranty	<div>5-year warranty. View the warranty for more details.</div>
Lead Time	<div>12+ weeks.</div>

LORENZ

Seating » Benches

Assembly & Delivery	<p>Product supplied in components packed on pallets.</p> <p>Lifting equipment required for receipt, assembly and placement of concrete product (by others).</p> <p>Supplied with ferrules, eyebolts and caps.</p>
Fixing Detail	<p>Freestanding</p>
How to Specify	<p>Design your layout with your select modules</p> <p>Check the module directions match up</p> <p>Send your layout marked up with codes to Botton + Gardiner to review and quote</p>

Care Instructions

Precast Concrete

Cleaning

Remove any loose surface deposits with a brush.

Regularly wash the coating using a solution of warm water and non-abrasive, pH neutral detergent solution (with low wax content).

Thoroughly rinse the surfaces after cleaning to remove all residues. You can use a sponge, a soft bristle brush or pressure water cleaners. For pressure cleaners ensure you use cold or warm water and average pressure. Rinse after with fresh water and leave to dry.

Do not use abrasive sponges, discs, or brushes.

Do not use corrosive detergents, descaling agents, or acidic components (bleach, ammonia, vinegar, abrasive pastes).

For cleaning marks or solidified substances from the surface use slightly abrasive sponges for non-stick ceramic pans, accurately and lightly treat the parts to be cleaned as above. Please check with Botton + Gardiner for advice relating to cleaning special circumstances (i.e. stains from paint, acid, etc.) as required.

Maintenance

For surfaces prone to additional wear like that used for street furniture, regular treatment is recommended (at least every 2 years) with products containing high wax content. Evenly apply the product with a soft cloth and polish with a circular motion.

Avoid the products from being placed on surfaces subject to infiltrations or stagnant water puddles.

Hardwood

Metalco selects exotic wood that best suits the product and/or the project according to availability. Species may include: Angelim Amargoso, Iroko, Movingui, and Ipe. Wood is always supplied sealed with a pigmented vegetable oil.

Cleaning

Remove any loose surface deposits with a soft bristled brush. Wipe down regularly with fresh water and a non-abrasive cloth.

Avoid exposure to high levels of direct heat sources and open flame, i.e. if a pot is too hot to hold it may damage your timber surface and keep away from open flame.

Maintenance

Lightly sand rough areas of timber, brush on one coat of Sikkens Cetol HLS or similar external grade oil in an appropriate colour. Complete the above initially within 3 months, then every 6 months or as required. Areas with high amounts of dust (like building sites) will require a higher frequency of maintenance.

Minor abrasion or scuff repairs: Apply Mirotone Wax or similar as per manufacturer's guidelines.

LORENZ

Seating » Benches

Additional Comments

Customisable

Huge variety of ways modules can be placed together allows for customisation of the configuration.

Options

The bench ends of the Lorenz are both slightly angled and more elliptical than circular. This results in modular pieces needing to match directionally to fit together and the short and long benches and seats have the options of internal or external to denote direction, i.e. the side the hardwood element is on in conjunction to the end. See downloads tab for more information for end directions on each piece.

Upon request, if the product allows it, it is possible to perform polishing operations.

The finished products are treated with a revitalising varnish and, if requested, anti-graffiti treatment can be applied.
