

BONDI CAPSULE BIN

Bins » Bin Housings



Collection: **Bondi**

Designed by: **Botton + Gardiner**

BONDI CAPSULE BIN

Bins » Bin Housings



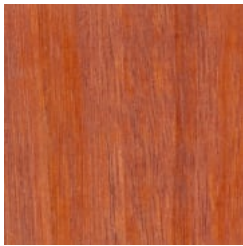
Hardwood Blackbutt
UV-Resistant Oil



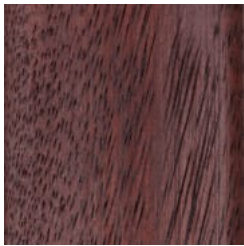
Hardwood Spotted
Gum UV-Resistant
Oil



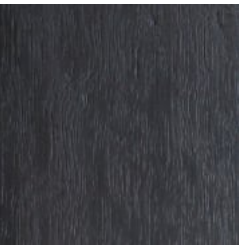
Hardwood Merbau
UV-Resistant Oil



Hardwood Mixed Red
UV-Resistant Oil Pine



Hardwood Mixed Red
UV-Resistant Oil
Mahogany



Hardwood Mixed Red
UV-Resistant Oil
Ebony



Duraslat™ XG Ravine



Duraslat™ XG Cave



Duraslat™ XG Alcove



Duraslat™ XG
Boulder



Duraslat™ XG Dune



Laminex® Compact
Laminate Black



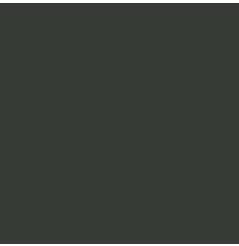
Laminex® Compact
Laminate Charcoal



Laminex® Compact
Laminate Lava Grey



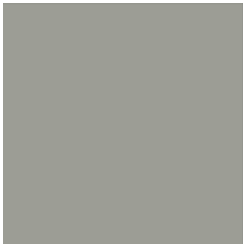
Core Powder-Coat
White Satin



Core Powder-Coat
Black Satin



Core Powder-Coat
Charcoal Satin



Core Powder-Coat
Palladium Silver Satin



Core Powder-Coat
Matt Black Matt



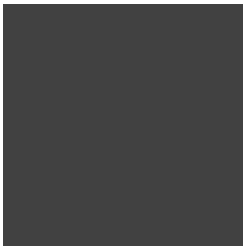
Core Powder-Coat
Pearl White Gloss



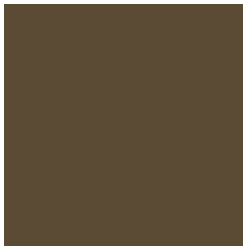
Solid Powder-Coat
Coffee Satin



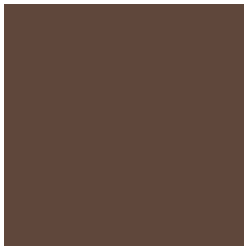
Solid Powder-Coat
Cove Satin



Solid Powder-Coat
Monument Matt



Solid Powder-Coat
Medium Bronze
Kinetic Flat



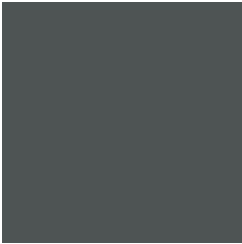
Textured Powder-
Coat Core Ten
Textured Metallic

BONDI CAPSULE BIN

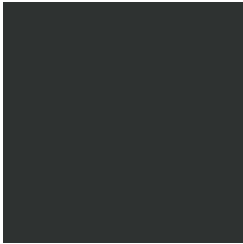
Bins » Bin Housings



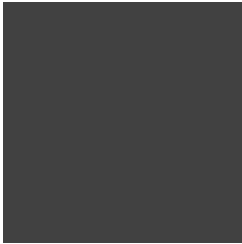
Textured Powder-Coat Asteroid
Textured Metallic



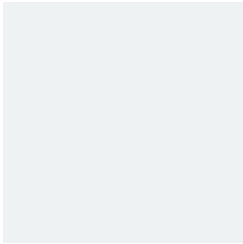
Textured Powder-Coat Bass Textured
Metallic



Textured Powder-Coat Textura Black



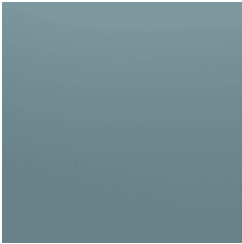
Textured Powder-Coat Textura
Monument



Textured Powder-Coat Textura White



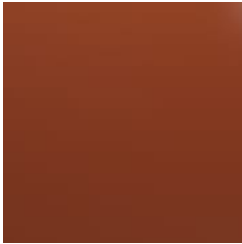
Signature Powder-Coat Deep Ocean
Satin



Signature Powder-Coat Wedgewood
Satin



Signature Powder-Coat Mangrove Satin



Signature Powder-Coat Territory Red
Satin



Signature Powder-Coat Claypot Satin



Signature Powder-Coat Paperbark Satin



Bold Powder-Coat Bondi Blue Gloss



Bold Powder-Coat Leaf Satin



Bold Powder-Coat Sensation Gloss



Bold Powder-Coat Lobster Satin



Bold Powder-Coat Moonlight Satin

BONDI CAPSULE BIN

Bins » Bin Housings



Compact capsule single, double litter bin housings for undercover. Panels in hardwood, Duraslat™ XG, v-groove compact laminate, powder-coat finishes.

Description Designed with Australia’s most famous beach in mind, the Bondi capsule single and double bin with a hood proves that litter bin housings can add to the aesthetics of outdoor public spaces. Its compact profile, curved corners, cut-out designs, plus a hood make it a sleek and versatile waste management option. Finishes include 5 hardwood, 5 Duraslat™ XG or v-groove compact laminate colours and 27 powder-coat finishes.

Made In Australia

BONDI CAPSULE BIN

Bins » Bin Housings

Dimensions	<u>80L</u>
	Single
	535mmW x 615mmD x 1095mmH
	Double
	1060mmW x 615mmD x 1095mmH
	Hood opening 180mmH
	<u>120L</u>
	Single
	605mmW x 640mmD x 1200mmH
	Double
	1175mmW x 640mmD x 1200mmH
	<u>240L</u>
	Single
	685mmW x 835mmD x 1295mmH

Capacity	<u>80L</u>
	Single
	533mmW x 615mmD x 910mmH
	Double
	1062mmW x 615mmD x 910mmH
	General waste chute: 320mm SQ Recycling chute: 250mm DIA
	<u>120L</u>
	Single
	585mmW x 660mmD x 1005mmH
	Double
	1165W x 660D x 1005mmH
	General waste chute: 320mm SQ Recycling chute: 320mm DIA
	<u>240L</u>
	Single
	685mmW x 835mmD x 1110mmH
	General waste chute: 320mm SQ
	Recycling chute: 320mm DIA

Frame	Powder-coated, zinc-primed steel
-------	----------------------------------

BONDI CAPSULE BIN

Bins » Bin Housings

Powder Coat	<p>Core</p> <p>White (satin), Black (satin), Charcoal (satin), Palladium Silver (satin), Matt Black (matt), Pearl White (gloss)</p> <p>Solid</p> <p>Coffee (satin), Cove (satin), Monument (matt), Medium Bronze Kinetic (flat)</p> <p>Textured</p> <p>Core Ten (textured metallic), Asteroid (textured metallic), Bass (textured metallic), Textura Black (textured), Textura Monument (textured), Textura White (textured)</p> <p>Signature</p> <p>Deep Ocean (satin), Wedgewood (satin), Mangrove (satin), Territory Red (matt), Claypot (satin), Paperbark (satin)</p> <p>Bold</p> <p>Bondi Blue (gloss), Leaf (satin), Sensation (gloss), Lobster (satin), Moonlight (satin)</p>
-------------	---

Signage	<p>Supplied with standard vinyl decal signage for the door panel for double capacity.</p> <p>Standard signage can be supplied with either rectangle or round vinyl decal while the hooded option is supplied with rectangle vinyl decal.</p> <p>Optional signage can be added to back panel and on single units on request.</p>
---------	---

Finishes	<p><u>Body</u></p> <p>Powder-coated, zinc-primed steel</p> <p><u>Front + Back Panels</u></p> <p>Hardwood</p> <p>Blackbutt, Spotted Gum, Mixed Red - Pine, Mahogany, Ebony Oil</p> <p>Duraslat™ XG</p> <p>Ravine, Cave, Alcove, Boulder, Dune</p> <p>V-Groove Compact Laminate</p> <p>Cut-Out Designs (Perforation Patterns)</p> <p>Dash or Speckled</p> <p><u>Powder-Coat Colours</u></p> <p>Standard or custom specified colours</p> <p><u>Fittings</u></p> <p>Compression lock prevents door rattling</p>
----------	---

BONDI CAPSULE BIN

Bins » Bin Housings

Sustainability	<p>Certified Hardwood All hardwood is sourced from sustainable forests certified by the Program for the Endorsement of Forest Certification (PEFC), the world's largest forestry certification system.</p> <p>Recycled Materials We locally source our steel. It means we know it uses recycled content and is 100% recyclable.</p> <p>Duraslat™ XG is made from 90% of recycled hardwood fibres and reclaimed plastic materials, which reduces demand for virgin materials.</p> <p>Low Pollutants Our powder-coating process doesn't emit Volatile Organic Compounds (VOCs) and has Environmental Product Declarations (EPDs).</p>
Warranty	5-year warranty. View the warranty for more details.
Lead Time	6-8 weeks
Assembly & Delivery	Shipped fully assembled on pallets.
Fixing Detail	Loose or surface fixed by others. Anchors not included.
How to Specify	<p>Select your size - single, double</p> <p>Select your capacity - 80L, 120L, 240L</p> <p>Select your body colour</p> <p>Select your feature panel design</p> <p>Select your feature panel colour</p> <p>Select your fixing type</p>

BONDI CAPSULE BIN

Bins » Bin Housings

Care Instructions

Hardwood

Cleaning

Remove any loose surface deposits with a soft bristled brush and wipe down with fresh water and a non-abrasive cloth.

Oiling

Oiling of timber will postpone natural greying, repel moisture, improve mould resistance, help maintain a smooth surface texture and enhance the grain and colour.

To maintain, lightly sand rough areas of timber and brush on one coat of timber decking oil every 6 months or as required.

Duraslat™ XG

Cleaning

Simply wash down occasionally. Do not use high pressure cleaners.

Powder-Coat

Cleaning

Carefully remove any loose surface deposits with a wet sponge or soft bristled brush.

Use a soft (non-abrasive) cloth or brush and a diluted solution of mild detergent and warm water.

Ensure surfaces are thoroughly rinsed with clean fresh water after cleaning to remove all residues.

Never use thinners, abrasive cleaning agents, alcohol-based, acid or alkali cleaning agents.

Customisable

Various door panels and an extensive colour selection is available making Bondi flexible to your style. We can customise signage to your requirements.

Additional Comments

Indoor and covered outdoor use