

# PROSPECT BLOCK BENCH

Seating » Benches



Collection: **Prospect**

Designed by: **Botton + Gardiner**

# PROSPECT BLOCK BENCH

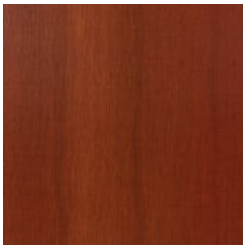
Seating » Benches



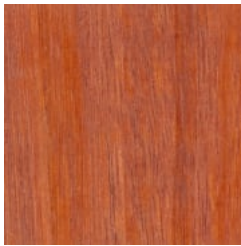
Hardwood Blackbutt  
UV-Resistant Oil



Hardwood Spotted  
Gum UV-Resistant  
Oil



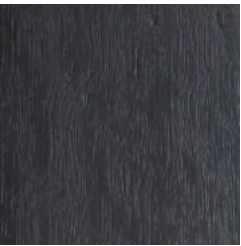
Hardwood Merbau  
UV-Resistant Oil



Hardwood Mixed Red  
UV-Resistant Oil Pine



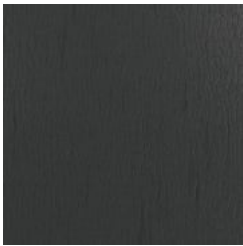
Hardwood Mixed Red  
UV-Resistant Oil  
Mahogany



Hardwood Mixed Red  
UV-Resistant Oil  
Ebony



Duraslat™ XG Ravine



Duraslat™ XG Cave



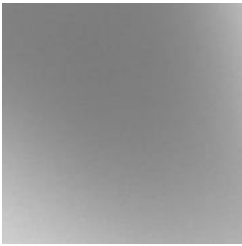
Duraslat™ XG Alcove



Duraslat™ XG  
Boulder



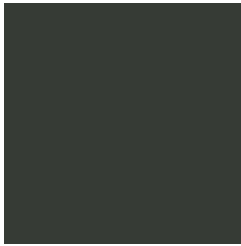
Duraslat™ XG Dune



Hot-Dip Galvanised  
Steel



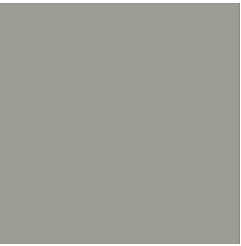
Core Powder-Coat  
White Satin



Core Powder-Coat  
Black Satin



Core Powder-Coat  
Charcoal Satin



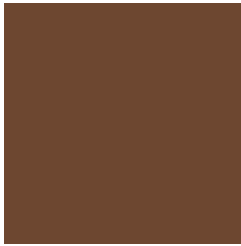
Core Powder-Coat  
Palladium Silver Satin



Core Powder-Coat  
Matt Black Matt



Core Powder-Coat  
Pearl White Gloss



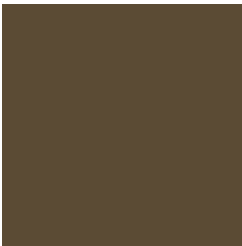
Solid Powder-Coat  
Coffee Satin



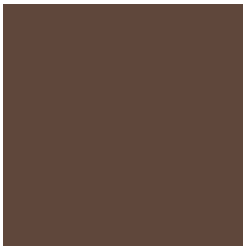
Solid Powder-Coat  
Cove Satin



Solid Powder-Coat  
Monument Matt



Solid Powder-Coat  
Medium Bronze  
Kinetic Flat



Textured Powder-  
Coat Core Ten  
Textured Metallic



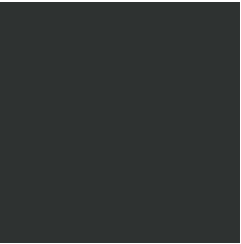
Textured Powder-  
Coat Asteroid  
Textured Metallic



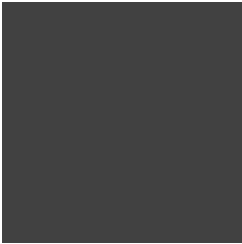
Textured Powder-  
Coat Bass Textured  
Metallic

# PROSPECT BLOCK BENCH

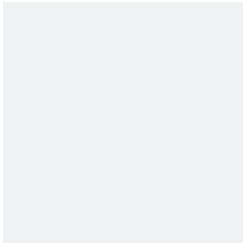
Seating » Benches



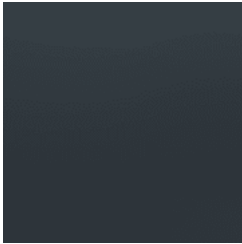
Textured Powder-Coat Textura Black



Textured Powder-Coat Textura Monument



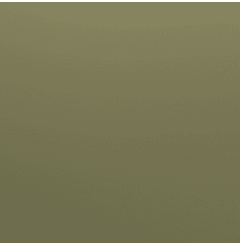
Textured Powder-Coat Textura White



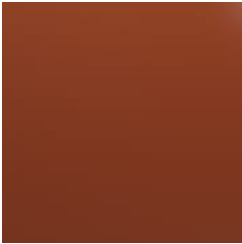
Signature Powder-Coat Deep Ocean Satin



Signature Powder-Coat Wedgewood Satin



Signature Powder-Coat Mangrove Satin



Signature Powder-Coat Territory Red Satin



Signature Powder-Coat Claypot Satin



Signature Powder-Coat Paperbark Satin



Bold Powder-Coat Bondi Blue Gloss



Bold Powder-Coat Leaf Satin



Bold Powder-Coat Sensation Gloss



Bold Powder-Coat Lobster Satin



Bold Powder-Coat Moonlight Satin

# PROSPECT BLOCK BENCH

Seating » Benches



Robust block bench design with a concrete base. Hardwood and Duraslat™ XG battens with steel framing details in 27 powder-coat or galvanised finishes.

**Description**      Featuring striking asymmetrical forms and robust materials that are based on our competition-winning designs for the Western Sydney Parklands Trust, the Prospect block bench is ideal for parkland and urban environments. With a solid precast concrete base that grounds the design, the bench is available in 5 hardwood and 5 Duraslat™ XG batten colours with steel framing details in 27 powder-coat colours or a galvanised finish to blend in or contrast with the landscape it sits in.

**Made In**      Australia

**Dimensions**      Hardwood  
1600mmW x 460mmD x 450mmH  
  
Duraslat™ XG  
1600mmW x 460mmD x 450mmH

**Weight**      Approx. 160kg

# PROSPECT BLOCK BENCH

Seating » Benches

Batten Type	Hardwood Blackbutt, Spotted Gum, Mixed Red - Pine, Mahogany, Ebony Oil  Duraslat™ XG Ravine, Cave, Alcove, Boulder, Dune
Frame	Hot-dip galvanised or powder-coated steel  Grey precast concrete block, off-form or acid etched exposed aggregate finish
Powder Coat	Core White (satin), Black (satin), Charcoal (satin), Palladium Silver (satin), Matt Black (matt), Pearl White (gloss)  Solid Coffee (satin), Cove (satin), Monument (matt), Medium Bronze Kinetic (flat)  Textured Core Ten (textured metallic), Asteroid (textured metallic), Bass (textured metallic), Textura Black (textured), Textura Monument (textured), Textura White (textured)  Signature Deep Ocean (satin), Wedgewood (satin), Mangrove (satin), Territory Red (matt), Claypot (satin), Paperbark (satin)  Bold Bondi Blue (gloss), Leaf (satin), Sensation (gloss), Lobster (satin), Moonlight (satin)
Sustainability	Certified Hardwood All hardwood is sourced from sustainable forests certified by the Program for the Endorsement of Forest Certification (PEFC), the world's largest forestry certification system.  Recycled Materials We locally source our steel. It means we know it uses recycled content and is 100% recyclable.  Duraslat™ XG is made from 90% of recycled hardwood fibres and reclaimed plastic materials, which reduces demand for virgin materials.  Low Pollutants Our powder-coating process doesn't emit Volatile Organic Compounds (VOCs) and has Environmental Product Declarations (EPDs).
Warranty	5-year warranty. View the <a href="#">warranty</a> for more details.

# PROSPECT BLOCK BENCH

Seating » Benches

Lead Time	6-8 weeks
Assembly & Delivery	Shipped fully assembled on pallets.
Fixing Detail	Surface or sub-surface fixed by others. Threaded rod to anchor supplied.
How to Specify	Select your cantilever orientation Select your batten finish Select your frame finish

# PROSPECT BLOCK BENCH

Seating » Benches

---

## Care Instructions

### Hardwood

#### Cleaning

Remove any loose surface deposits with a soft bristled brush and wipe down with fresh water and a non-abrasive cloth.

#### Oiling

Oiling of timber will postpone natural greying, repel moisture, improve mould resistance, help maintain a smooth surface texture and enhance the grain and colour.

To maintain, lightly sand rough areas of timber and brush on one coat of timber decking oil every 6 months or as required.

### Duraslat™ XG

#### Cleaning

Simply wash down occasionally. Do not use high pressure cleaners.

### Powder-Coat

#### Cleaning

Carefully remove any loose surface deposits with a wet sponge or soft bristled brush.

Use a soft (non-abrasive) cloth or brush and a diluted solution of mild detergent and warm water.

Ensure surfaces are thoroughly rinsed with clean fresh water after cleaning to remove all residues.

Never use thinners, abrasive cleaning agents, alcohol-based, acid or alkali cleaning agents.

### Hot-Dip Galvanised Steel

For general cleaning of bulk contaminants such as dirt and the like, ordinary laundry soaps can be satisfactorily used.

For more stubborn or larger areas, the use of a low-pressure wash (eg. a gurney gun) with just pure water or in conjunction with proprietary cleaning materials, such as car wash or truck wash, can be effective. It is important that the steel be washed down with fresh water after cleaning.

The cleaning treatment of the galvanising should be conservative at first and then if the situation demands, the treatment can become steadily more aggressive. Also, wherever some form of mechanical abrasion or “scrubbing” is required, the use of a hard, plastic bristle brush is recommended. Steel bristle brushes are not to be used since they will cause discolouration.

Mechanical methods of cleaning zinc surfaces can cause aesthetic issues. The “cleaned” areas are likely to contrast with adjacent untreated surfaces and may take a significant period of time to weather to a uniform colour. If aesthetics is a large concern, it is advisable to first test the cleaning method in an inconspicuous area in case the aesthetic effect is unappealing.

# PROSPECT BLOCK BENCH

Seating » Benches

Additional  
Comments

Option: left or right-hand cantilever (when seated).