

# VERGE CURVED BENCH

Seating » Benches



Collection: **Verge**

Designed by: **Botton + Gardiner**

# VERGE CURVED BENCH

Seating » Benches



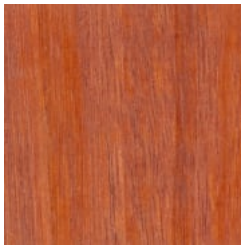
Hardwood Blackbutt  
UV-Resistant Oil



Hardwood Spotted  
Gum UV-Resistant  
Oil



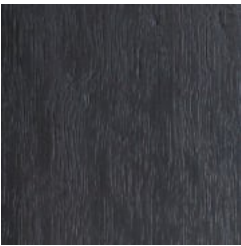
Hardwood Merbau  
UV-Resistant Oil



Hardwood Mixed Red  
UV-Resistant Oil Pine



Hardwood Mixed Red  
UV-Resistant Oil  
Mahogany



Hardwood Mixed Red  
UV-Resistant Oil  
Ebony



Duraslat™ XG Ravine



Duraslat™ XG Cave



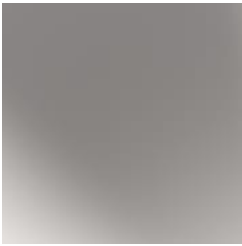
Duraslat™ XG Alcove



Duraslat™ XG  
Boulder



Duraslat™ XG Dune



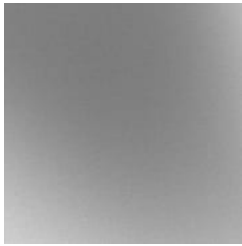
Clear Anodised  
Aluminium



Alugrain Driftwood



Alugrain Spotted  
Gum



Hot-Dip Galvanised  
Steel



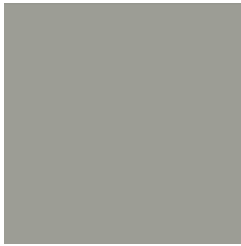
Core Powder-Coat  
White Satin



Core Powder-Coat  
Black Satin



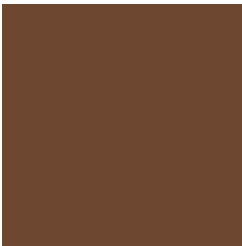
Core Powder-Coat  
Charcoal Satin



Core Powder-Coat  
Palladium Silver Satin



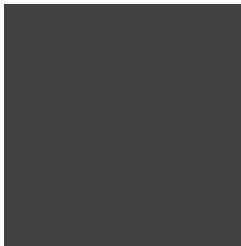
Core Powder-Coat  
Matt Black Matt



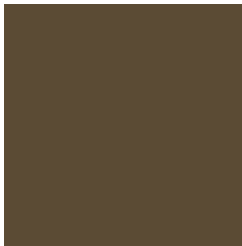
Solid Powder-Coat  
Coffee Satin



Solid Powder-Coat  
Cove Satin



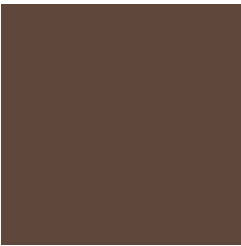
Solid Powder-Coat  
Monument Matt



Solid Powder-Coat  
Medium Bronze  
Kinetic Flat

# VERGE CURVED BENCH

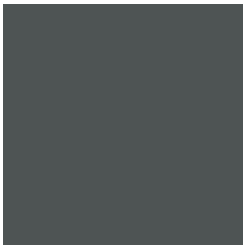
Seating » Benches



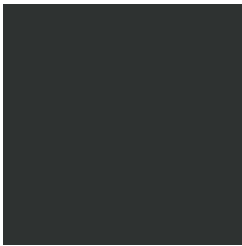
Textured Powder-Coat Core Ten  
Textured Metallic



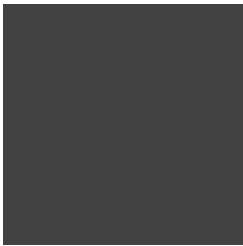
Textured Powder-Coat Asteroid  
Textured Metallic



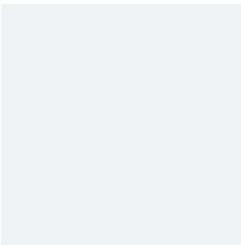
Textured Powder-Coat Bass Textured  
Metallic



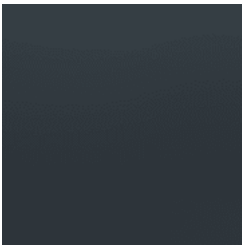
Textured Powder-Coat Textura Black



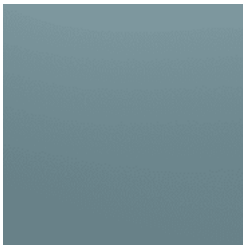
Textured Powder-Coat Textura  
Monument



Textured Powder-Coat Textura White



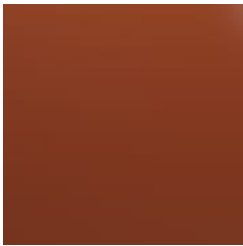
Signature Powder-Coat Deep Ocean  
Satin



Signature Powder-Coat Wedgewood  
Satin



Signature Powder-Coat Mangrove Satin



Signature Powder-Coat Territory Red  
Satin



Signature Powder-Coat Claypot Satin



Signature Powder-Coat Paperbark Satin



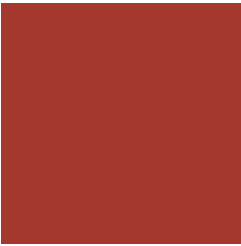
Bold Powder-Coat Bondi Blue Gloss



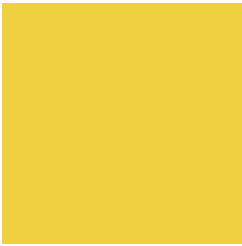
Bold Powder-Coat Leaf Satin



Bold Powder-Coat Sensation Gloss



Bold Powder-Coat Lobster Satin



Bold Powder-Coat Moonlight Satin



# VERGE CURVED BENCH

Seating » Benches



Simple, durable curved bench. Hardwood, Duraslat™ XG, aluminium battens with steel posts and base plates in 27 powder-coat or galvanised finishes.

## Description

The Verge curved bench is a simple, modular, highly durable design. Hardwood, Duraslat™ XG, aluminium battens work with cylindrical steel posts and circular base plates to add a functional and utilitarian feel to spaces you know are going to get their fair share of wear and tear. The modularity allows for snaking curve, full ring or shallow bend configurations to be created to break up linear spaces. It is ideal for seating around trees, along curved garden beds and walls. Finishes include 5 hardwood or 5 Duraslat™ XG colours and 27 powder-coat finishes or a galvanised finish.

## Made In

Australia

## Dimensions

Standard Arc Lengths  
Hardwood: 2000mm  
Duraslat™ XG: 2000mm  
Aluminium: 2000mm

Seat height: 455mm  
Seat depth: 440mm

\*\*Radius as specified - minimum outer radius possible is 1000mm

# VERGE CURVED BENCH

Seating » Benches

|                |  |
|----------------|--|
| Batten Type    | Hardwood<br>Blackbutt, Spotted Gum, Mixed Red - Pine, Mahogany, Ebony Oil<br><br>Duraslat™ XG<br>Ravine, Cave, Alcove, Boulder, Dune<br><br>Aluminium   Alugrain<br>Clear Anodised, Driftwood, Spotted Gum   |
| Frame          | Hot-dip galvanised or powder-coated steel  |
| Powder Coat    | Core<br>White (satin), Black (satin), Charcoal (satin), Palladium Silver (satin), Matt Black (matt), Pearl White (gloss)<br><br>Solid<br>Coffee (satin), Cove (satin), Monument (matt), Medium Bronze Kinetic (flat)<br><br>Textured<br>Core Ten (textured metallic), Asteroid (textured metallic), Bass (textured metallic), Textura Black (textured), Textura Monument (textured), Textura White (textured)<br><br>Signature<br>Deep Ocean (satin), Wedgewood (satin), Mangrove (satin), Territory Red (matt), Claypot (satin), Paperbark (satin)<br><br>Bold<br>Bondi Blue (gloss), Leaf (satin), Sensation (gloss), Lobster (satin), Moonlight (satin) |
| Sustainability | Certified Hardwood<br>All hardwood is sourced from sustainable forests certified by the Program for the Endorsement of Forest Certification (PEFC), the world's largest forestry certification system.<br><br>Recycled Materials<br>We locally source our steel. It means we know it uses recycled content and is 100% recyclable.<br><br>Duraslat™ XG is made from 90% of recycled hardwood fibres and reclaimed plastic materials, which reduces demand for virgin materials.<br><br>Low Pollutants<br>Our powder-coating process doesn't emit Volatile Organic Compounds (VOCs) and has Environmental Product Declarations (EPDs).                      |
| Warranty       | 5-year warranty. View the <a href="#">warranty</a> for more details.   |

# VERGE CURVED BENCH

Seating » Benches

---

|           |           |
|-----------|-----------|
| Lead Time | 6-8 weeks |
|-----------|-----------|

---

|                     |                                     |
|---------------------|-------------------------------------|
| Assembly & Delivery | Shipped fully assembled on pallets. |
|---------------------|-------------------------------------|

---

|               |   |
|---------------|---|
| Fixing Detail | Post fixed by others - surface fixed or core-holed. Anchors not included. |
|---------------|---|

---

|                |   |
|----------------|---|
| How to Specify | Select your arc length<br>Specify your radius<br>Select your batten finish<br>Select your frame finish<br>Select your fixing type |
|----------------|---|

---

|                   |  |
|-------------------|--|
| Care Instructions | <p><u>Hardwood</u></p> <p>Cleaning<br/>Remove any loose surface deposits with a soft bristled brush and wipe down with fresh water and a non-abrasive cloth.</p> <p>Oiling<br/>Oiling of timber will postpone natural greying, repel moisture, improve mould resistance, help maintain a smooth surface texture and enhance the grain and colour.</p> <p>To maintain, lightly sand rough areas of timber and brush on one coat of timber decking oil every 6 months or as required.</p> <p><u>Duraslat™ XG</u></p> <p>Cleaning<br/>Simply wash down occasionally. Do not use high pressure cleaners.</p> <p><u>Powder-Coat</u></p> <p>Cleaning<br/>Carefully remove any loose surface deposits with a wet sponge or soft bristled brush.</p> <p>Use a soft (non-abrasive) cloth or brush and a diluted solution of mild detergent and warm water.</p> <p>Ensure surfaces are thoroughly rinsed with clean fresh water after cleaning to remove all residues.</p> <p>Never use thinners, abrasive cleaning agents, alcohol-based, acid or alkali cleaning agents.</p> |
|-------------------|--|

---

|                     |  |
|---------------------|--|
| Additional Comments | Curved benches are made to order to your specified radius and arc length. Drawings are issued for sign off prior to manufacture. |
|---------------------|--|

---