

URBAN TRI TABLE

Tables » Dining Height Tables



Collection: **Urban**

Designed by: **Botton + Gardiner**

URBAN TRI TABLE

Tables » Dining Height Tables



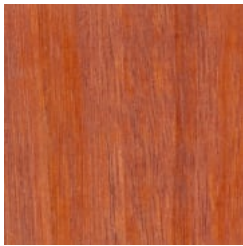
Hardwood Blackbutt
UV-Resistant Oil



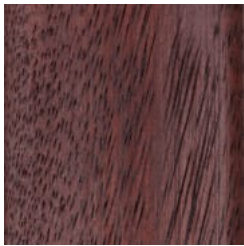
Hardwood Spotted
Gum UV-Resistant
Oil



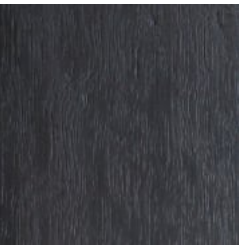
Hardwood Merbau
UV-Resistant Oil



Hardwood Mixed Red
UV-Resistant Oil Pine



Hardwood Mixed Red
UV-Resistant Oil
Mahogany



Hardwood Mixed Red
UV-Resistant Oil
Ebony



Duraslat™ XG Ravine



Duraslat™ XG Cave



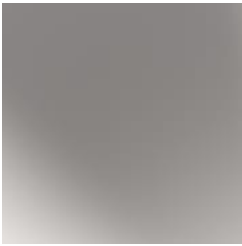
Duraslat™ XG Alcove



Duraslat™ XG
Boulder



Duraslat™ XG Dune



Natural Aluminium



Core Powder-Coat
White Satin



Core Powder-Coat
Black Satin



Core Powder-Coat
Charcoal Satin



Core Powder-Coat
Palladium Silver Satin



Core Powder-Coat
Matt Black Matt



Core Powder-Coat
Pearl White Gloss



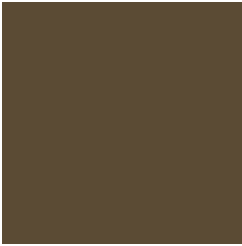
Solid Powder-Coat
Coffee Satin



Solid Powder-Coat
Cove Satin



Solid Powder-Coat
Monument Matt



Solid Powder-Coat
Medium Bronze
Kinetic Flat



Textured Powder-
Coat Core Ten
Textured Metallic



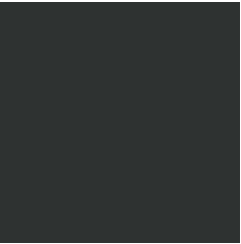
Textured Powder-
Coat Asteroid
Textured Metallic



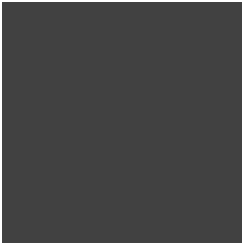
Textured Powder-
Coat Bass Textured
Metallic

URBAN TRI TABLE

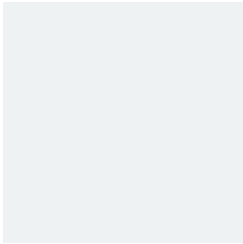
Tables » Dining Height Tables



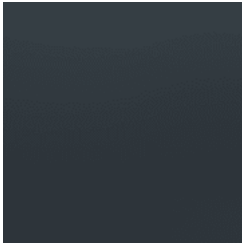
Textured Powder-Coat Textura Black



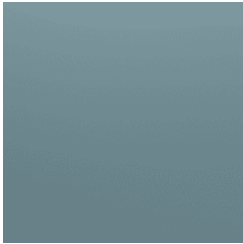
Textured Powder-Coat Textura Monument



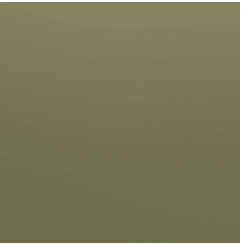
Textured Powder-Coat Textura White



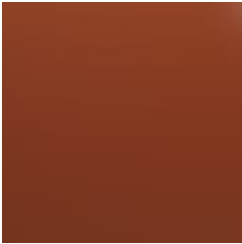
Signature Powder-Coat Deep Ocean Satin



Signature Powder-Coat Wedgewood Satin



Signature Powder-Coat Mangrove Satin



Signature Powder-Coat Territory Red Satin



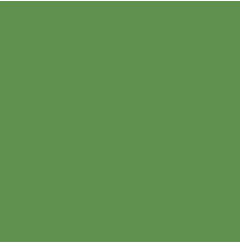
Signature Powder-Coat Claypot Satin



Signature Powder-Coat Paperbark Satin



Bold Powder-Coat Bondi Blue Gloss



Bold Powder-Coat Leaf Satin



Bold Powder-Coat Sensation Gloss



Bold Powder-Coat Lobster Satin



Bold Powder-Coat Moonlight Satin

URBAN TRI TABLE

Tables » Dining Height Tables



Unique tri table. Irregular hexagon shape. Hardwood, Duraslat™ XG battens with an elegant cast aluminium frame in 27 powder-coat finishes or polished.

Description

Referencing Paris’s famous wrought ironwork, curved cast aluminium framing is complemented by muscular hardwood or Duraslat™ XG surfaces to offer a timeless and unique Urban tri table. Featuring a unique irregular hexagon shape and striking slatted top design, the table creates a focal gathering point and is ideal for large groups. Finishes include 5 hardwood or 5 Duraslat™ XG colours and 27 powder-coat finishes or a polished aluminium finish. Urban is close to our heart; a classic, elegant, and highly functional collection that works in almost any public space.

Made In Australia

Dimensions

Hardwood
O/A 2130mmW x 1830mmD x 750mmH

Duraslat™ XG
O/A 2130mmW x 1830mmD x 750mmH

Edge length - 1500mmW
Flattened corner length - 630mm

Weight 130kg

URBAN TRI TABLE

Tables » Dining Height Tables

Batten Type	<p>Hardwood Blackbutt, Spotted Gum, Mixed Red - Pine, Mahogany, Ebony Oil</p> <p>Duraslat™ XG Ravine, Cave, Alcove, Boulder, Dune</p>
Frame	<p>Cast aluminium in a powder-coat or polished finish</p> <p>Post: powder-coated galvanised steel, colour to match frame specification or silver to coordinate with the polished aluminium finish</p>
Powder Coat	<p>Core White (satin), Black (satin), Charcoal (satin), Palladium Silver (satin), Matt Black (matt), Pearl White (gloss)</p> <p>Solid Coffee (satin), Cove (satin), Monument (matt), Medium Bronze Kinetic (flat)</p> <p>Textured Core Ten (textured metallic), Asteroid (textured metallic), Bass (textured metallic), Textura Black (textured), Textura Monument (textured), Textura White (textured)</p> <p>Signature Deep Ocean (satin), Wedgewood (satin), Mangrove (satin), Territory Red (matt), Claypot (satin), Paperbark (satin)</p> <p>Bold Bondi Blue (gloss), Leaf (satin), Sensation (gloss), Lobster (satin), Moonlight (satin)</p>
Sustainability	<p>Certified Hardwood All hardwood is sourced from sustainable forests certified by the Program for the Endorsement of Forest Certification (PEFC), the world's largest forestry certification system.</p> <p>Recycled Materials We locally source our aluminium. It means we know it uses recycled content and is 100% recyclable.</p> <p>Duraslat™ XG is made from 90% of recycled hardwood fibres and reclaimed plastic materials, which reduces demand for virgin materials.</p> <p>Low Pollutants Our powder-coating process doesn't emit Volatile Organic Compounds (VOCs) and has Environmental Product Declarations (EPDs).</p>
Warranty	<p>5-year warranty. View the warranty for more details.</p>

URBAN TRI TABLE

Tables » Dining Height Tables

Lead Time	6-8 weeks
-----------	-----------

Assembly & Delivery	Flat pack assembly. Assembled on site. Some simple assembly is required to attach the legs prior to installation.
---------------------	---

Due to the weight of this item (130kg) the top will be delivered on a pallet with the legs separate. A forklift or lifting equipment (by others) is required to take delivery.

Fixing Detail	Post fixed by others - surface, sub-surface or core-holed. Anchors not included.
---------------	--

How to Specify	Select your batten finish Select your frame finish Select your fixing type
----------------	--

Care Instructions	<p><u>Hardwood</u></p> <p>Cleaning</p> <p>Remove any loose surface deposits with a soft bristled brush and wipe down with fresh water and a non-abrasive cloth.</p> <p>Oiling</p> <p>Oiling of timber will postpone natural greying, repel moisture, improve mould resistance, help maintain a smooth surface texture and enhance the grain and colour.</p> <p>To maintain, lightly sand rough areas of timber and brush on one coat of timber decking oil every 6 months or as required.</p> <p><u>Powder-Coat</u></p> <p>Cleaning</p> <p>Carefully remove any loose surface deposits with a wet sponge or soft bristled brush.</p> <p>Use a soft (non-abrasive) cloth or brush and a diluted solution of mild detergent and warm water.</p> <p>Ensure surfaces are thoroughly rinsed with clean fresh water after cleaning to remove all residues.</p> <p>Never use thinners, abrasive cleaning agents, alcohol-based, acid or alkali cleaning agents.</p>
-------------------	--

Additional Comments	Opt to add umbrella hole + flange or outdoor power and GPOs to make your settings flexible outdoor working zones, ideal for universities and schools.
---------------------	---
