

# URBAN POST TABLE

Tables » Dining Height Tables



Collection: **Urban**

Designed by: **Botton + Gardiner**

# URBAN POST TABLE

Tables » Dining Height Tables



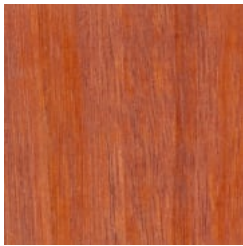
Hardwood Blackbutt  
UV-Resistant Oil



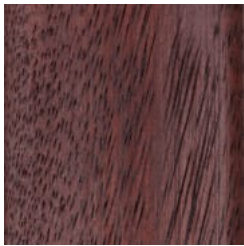
Hardwood Spotted  
Gum UV-Resistant  
Oil



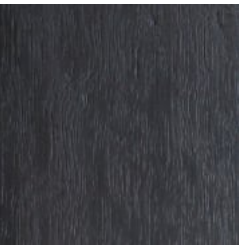
Hardwood Merbau  
UV-Resistant Oil



Hardwood Mixed Red  
UV-Resistant Oil Pine



Hardwood Mixed Red  
UV-Resistant Oil  
Mahogany



Hardwood Mixed Red  
UV-Resistant Oil  
Ebony



Duraslat™ XG Ravine



Duraslat™ XG Cave



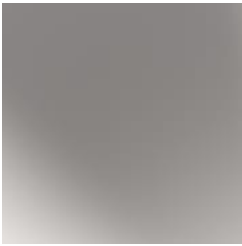
Duraslat™ XG Alcove



Duraslat™ XG  
Boulder



Duraslat™ XG Dune



Clear Anodised  
Aluminium



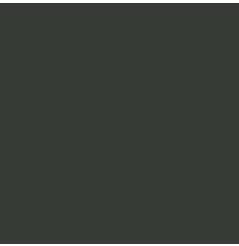
Alugrain Driftwood



Alugrain Spotted  
Gum



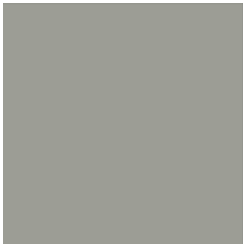
Core Powder-Coat  
White Satin



Core Powder-Coat  
Black Satin



Core Powder-Coat  
Charcoal Satin



Core Powder-Coat  
Palladium Silver Satin



Core Powder-Coat  
Matt Black Matt



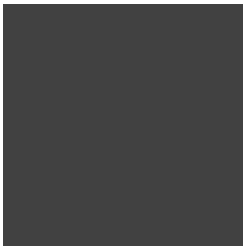
Core Powder-Coat  
Pearl White Gloss



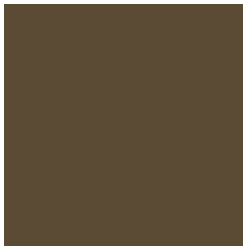
Solid Powder-Coat  
Coffee Satin



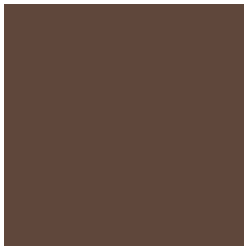
Solid Powder-Coat  
Cove Satin



Solid Powder-Coat  
Monument Matt



Solid Powder-Coat  
Medium Bronze  
Kinetic Flat



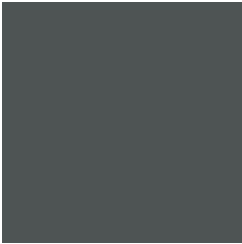
Textured Powder-  
Coat Core Ten  
Textured Metallic

# URBAN POST TABLE

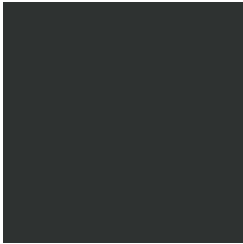
Tables » Dining Height Tables



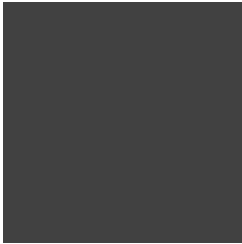
Textured Powder-Coat Asteroid  
Textured Metallic



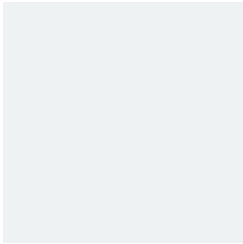
Textured Powder-Coat Bass Textured  
Metallic



Textured Powder-Coat Textura Black



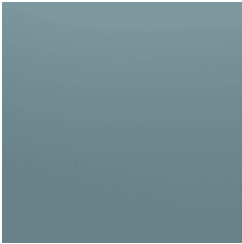
Textured Powder-Coat Textura  
Monument



Textured Powder-Coat Textura White



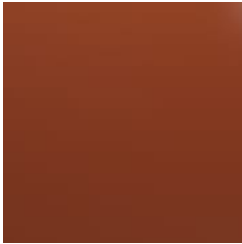
Signature Powder-Coat Deep Ocean  
Satin



Signature Powder-Coat Wedgewood  
Satin



Signature Powder-Coat Mangrove Satin



Signature Powder-Coat Territory Red  
Satin



Signature Powder-Coat Claypot Satin



Signature Powder-Coat Paperbark Satin



Bold Powder-Coat Bondi Blue Gloss



Bold Powder-Coat Leaf Satin



Bold Powder-Coat Sensation Gloss



Bold Powder-Coat Lobster Satin



Bold Powder-Coat Moonlight Satin



# URBAN POST TABLE

Tables » Dining Height Tables



Timeless post table design. Hardwood, Duraslat™ XG, aluminium battens with an elegant cast aluminium frame in 27 powder-coat finishes or polished.

**Description** Referencing Paris’s famous wrought ironwork, curved cast aluminium framing is complemented by muscular hardwood, Duraslat™ XG or aluminium surfaces to offer a timeless Urban post table. Finishes include 5 hardwood, 5 Duraslat™ XG or 3 aluminium colours and 27 powder-coat finishes or a polished aluminium finish. Urban is close to our heart; a classic, elegant, and highly functional collection that works in almost any public space.

**Made In** Australia

**Dimensions**

Hardwood  
1800mmW x 740mmD x 730mmH

Duraslat™ XG  
1600mmW x 740mmD x 730mmH

Aluminium | Alugrain  
2000mmW x 740mmD x 730mmH

# URBAN POST TABLE

Tables » Dining Height Tables

Batten Type	<div>Hardwood</div> <div>Blackbutt, Spotted Gum, Mixed Red - Pine, Mahogany, Ebony Oil</div> <div>Duraslat™ XG</div> <div>Ravine, Cave, Alcove, Boulder, Dune</div> <div>Aluminium   Alugrain</div> <div>Clear Anodised, Driftwood, Spotted Gum</div>
Frame	<div>Cast aluminium in a powder-coat or polished finish</div> <div>Post: powder-coated galvanized steel, colour to match frame specification or silver to coordinate with the polished aluminum finish</div>
Powder Coat	<div>Core</div> <div>White (satin), Black (satin), Charcoal (satin), Palladium Silver (satin), Matt Black (matt), Pearl White (gloss)</div> <div>Solid</div> <div>Coffee (satin), Cove (satin), Monument (matt), Medium Bronze Kinetic (flat)</div> <div>Textured</div> <div>Core Ten (textured metallic), Asteroid (textured metallic), Bass (textured metallic), Textura Black (textured), Textura Monument (textured), Textura White (textured)</div> <div>Signature</div> <div>Deep Ocean (satin), Wedgewood (satin), Mangrove (satin), Territory Red (matt), Claypot (satin), Paperbark (satin)</div> <div>Bold</div> <div>Bondi Blue (gloss), Leaf (satin), Sensation (gloss), Lobster (satin), Moonlight (satin)</div>
Sustainability	<div>Certified Hardwood</div> <div>All hardwood is sourced from sustainable forests certified by the Program for the Endorsement of Forest Certification (PEFC), the world's largest forestry certification system.</div> <div>Recycled Materials</div> <div>We locally source our aluminium. It means we know it uses recycled content and is 100% recyclable.</div> <div>Duraslat™ XG is made from 90% of recycled hardwood fibres and reclaimed plastic materials, which reduces demand for virgin materials.</div> <div>Low Pollutants</div> <div>Our powder-coating process doesn't emit Volatile Organic Compounds (VOCs) and has Environmental Product Declarations (EPDs).</div>

# URBAN POST TABLE

Tables » Dining Height Tables

Warranty	5-year warranty. View the <a href="#">warranty</a> for more details.
Lead Time	6-8 weeks
Assembly & Delivery	Shipped fully assembled on pallets.
Fixing Detail	Post fixed by others - surface, sub-surface or core-holed. Anchors not included.
How to Specify	Select your length Select your batten finish Select your frame finish Select your fixing type
Care Instructions	<p><u>Hardwood</u> Cleaning Remove any loose surface deposits with a soft bristled brush and wipe down with fresh water and a non-abrasive cloth.</p> <p>Oiling Oiling of timber will postpone natural greying, repel moisture, improve mould resistance, help maintain a smooth surface texture and enhance the grain and colour.</p> <p>To maintain, lightly sand rough areas of timber and brush on one coat of timber decking oil every 6 months or as required.</p> <p><u>Duraslat™ XG</u> Cleaning Simply wash down occasionally. Do not use high pressure cleaners.</p> <p><u>Powder-Coat</u> Cleaning Carefully remove any loose surface deposits with a wet sponge or soft bristled brush.</p> <p>Use a soft (non-abrasive) cloth or brush and a diluted solution of mild detergent and warm water.</p> <p>Ensure surfaces are thoroughly rinsed with clean fresh water after cleaning to remove all residues.</p> <p>Never use thinners, abrasive cleaning agents, alcohol-based, acid or alkali cleaning agents.</p>
Additional Comments	Opt to add umbrella hole + flange or outdoor power and GPOs to make your settings flexible outdoor working zones, ideal for universities and schools.