

AVENUE PLATFORM SEAT

Seating » Seats



Collection: **Avenue**

Designed by: **Botton + Gardiner**

AVENUE PLATFORM SEAT

Seating » Seats



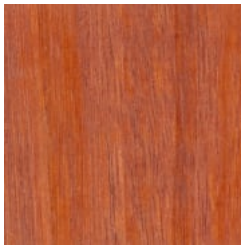
Hardwood Blackbutt
UV-Resistant Oil



Hardwood Spotted
Gum UV-Resistant
Oil



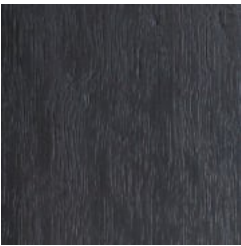
Hardwood Merbau
UV-Resistant Oil



Hardwood Mixed Red
UV-Resistant Oil
Clear



Hardwood Mixed Red
UV-Resistant Oil
Mahogany



Hardwood Mixed Red
UV-Resistant Oil
Ebony



Duraslat™ XG Ravine



Duraslat™ XG Cave



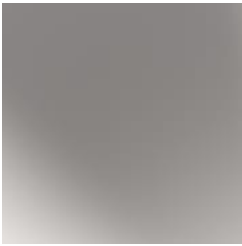
Duraslat™ XG Alcove



Duraslat™ XG
Boulder



Duraslat™ XG Dune



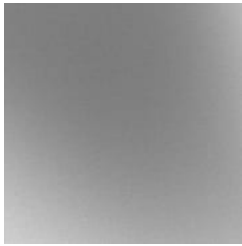
Clear Anodised
Aluminium



Alugrain Driftwood



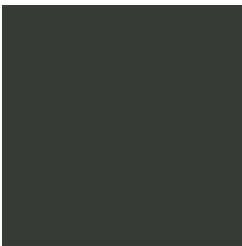
Alugrain Spotted
Gum



Galvanised Steel



Core Powder-Coat
White Satin



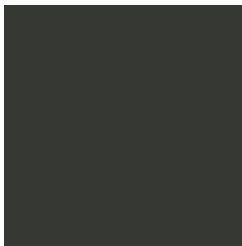
Core Powder-Coat
Black Satin



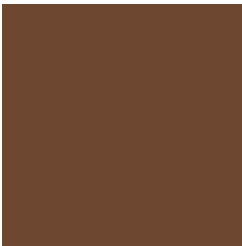
Core Powder-Coat
Charcoal Satin



Core Powder-Coat
Palladium Silver Satin



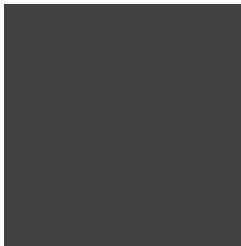
Core Powder-Coat
Matt Black Matt



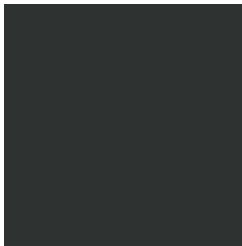
Solid Powder-Coat
Coffee Satin



Solid Powder-Coat
Cove Satin



Solid Powder-Coat
Monument Matt



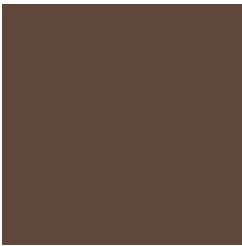
Textured Powder-
Coat Textura Black

AVENUE PLATFORM SEAT

Seating » Seats



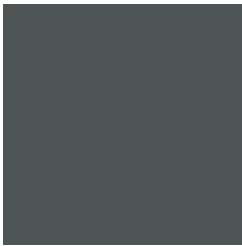
Solid Powder-Coat
Medium Bronze
Kinetic Flat



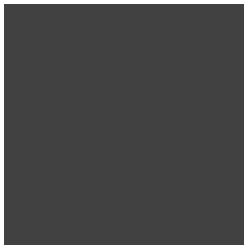
Textured Powder-Coat
Core Ten
Textured Metallic



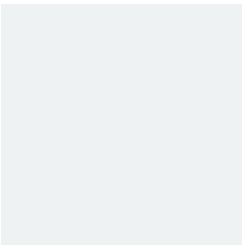
Textured Powder-Coat
Asteroid
Textured Metallic



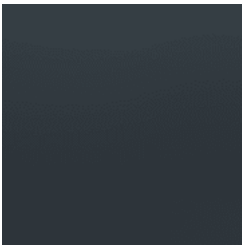
Textured Powder-Coat
Bass Textured
Metallic



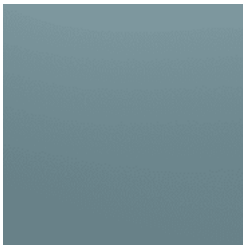
Textured Powder-Coat
Textura
Monument



Textured Powder-Coat
Textura White



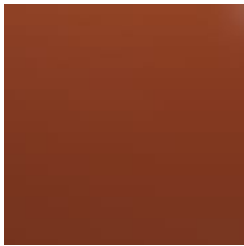
Signature Powder-Coat
Deep Ocean
Satin



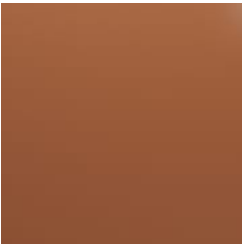
Signature Powder-Coat
Wedgewood
Satin



Signature Powder-Coat
Mangrove Satin



Signature Powder-Coat
Territory Red
Satin



Signature Powder-Coat
Claypot Satin



Signature Powder-Coat
Paperbark Satin



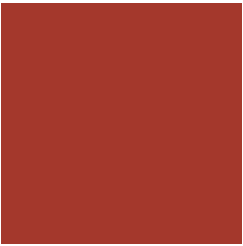
Bold Powder-Coat
Bondi Blue Gloss



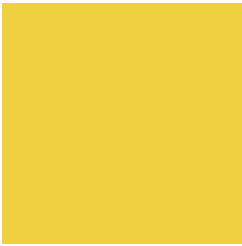
Bold Powder-Coat
Leaf Satin



Bold Powder-Coat
Sensation Gloss



Bold Powder-Coat
Lobster Satin



Bold Powder-Coat
Moonlight Satin

AVENUE PLATFORM SEAT

Seating » Seats



Minimalist platform seat design. Battens in hardwood, Duraslat™ XG, aluminium. Tapered steel frame in 27 powder-coat or galvanised finishes.

Description Rectangular battens and a tapered steel frame combine to deliver a minimalist seating design that takes its cues from 20th century industrial design. The functional feel and light appearance of the Avenue platform seat complements and sits within most public spaces. Finishes include 5 hardwood, 5 Duraslat™ XG and 3 aluminium batten colours and 27 powder-coat finishes or a galvanised finish.

Made In Australia

Dimensions

Hardwood
2400mmW x 1010mmD x 820mmH
(Backrest: 1400mmW)

Duraslat™ XG
2200mmW x 1010mmD x 820mmH
(Backrest: 1200mmW)

Aluminium | Alugrain
2600mmW x 1000mmD x 820mmH
(Backrest: 1500mmW)

Seat height: 450mm

AVENUE PLATFORM SEAT

Seating » Seats

Batten Type	<div>Hardwood Blackbutt, Spotted Gum, Mixed Red - Clear, Mahogany, Ebony Oil</div> <div>Duraslat™ XG Ravine, Cave, Alcove, Boulder, Dune</div> <div>Aluminium Alugrain Clear Anodised, Driftwood, Spotted Gum</div>
Frame	<div>Powder-coated steel or hot-dip galvanised steel.</div> <div>Optional 316 stainless steel in matt textured frame finish available on request.</div>
Powder Coat	<div>Core White (satin), Black (satin), Charcoal (satin), Palladium Silver (satin), Matt Black (matt), Pearl White (gloss)</div> <div>Solid Coffee (satin), Cove (satin), Monument (matt), Medium Bronze Kinetic (flat)</div> <div>Textured Core Ten (textured metallic), Asteroid (textured metallic), Bass (textured metallic), Textura Black (textured), Textura Monument (textured), Textura White (textured)</div> <div>Signature Deep Ocean (satin), Wedgewood (satin), Mangrove (satin), Territory Red (matt), Claypot (satin), Paperbark (satin)</div> <div>Bold Bondi Blue (gloss), Leaf (satin), Sensation (gloss), Lobster (satin), Moonlight (satin)</div>
Sustainability	<div>Certified Hardwood All hardwood is sourced from sustainable forests certified by the Program for the Endorsement of Forest Certification (PEFC), the world's largest forestry certification system.</div> <div>Recycled Materials We locally source our steel. It means we know it uses recycled content and is 100% recyclable.</div> <div>Duraslat™ XG is made from 90% of recycled hardwood fibres and reclaimed plastic materials, which reduces demand for virgin materials.</div> <div>Low Pollutants Our powder-coating process doesn't emit Volatile Organic Compounds (VOCs) and has Environmental Product Declarations (EPDs).</div>

AVENUE PLATFORM SEAT

Seating » Seats

Warranty	5-year warranty. View the warranty for more details.
Lead Time	4-6 weeks
Assembly & Delivery	Shipped fully assembled on pallets.
Fixing Detail	Surface or sub-surface fixed by others. Anchors not included. Shims available for sub-surface fixing on request.
How to Specify	Select your length Select your batten finish Select your frame finish Select your fixing type

AVENUE PLATFORM SEAT

Seating » Seats

Care Instructions

Hardwood

Cleaning

Remove any loose surface deposits with a soft bristled brush and wipe down with fresh water and a non-abrasive cloth.

Oiling

Oiling of timber will postpone natural greying, repel moisture, improve mould resistance, help maintain a smooth surface texture and enhance the grain and colour.

To maintain, lightly sand rough areas of timber and brush on one coat of timber decking oil every 6 months or as required.

Duraslat™ XG

Cleaning

Simply wash down occasionally. Do not use high pressure cleaners.

Powder-Coat

Cleaning

Carefully remove any loose surface deposits with a wet sponge or soft bristled brush.

Use a soft (non-abrasive) cloth or brush and a diluted solution of mild detergent and warm water.

Ensure surfaces are thoroughly rinsed with clean fresh water after cleaning to remove all residues.

Never use thinners, abrasive cleaning agents, alcohol-based, acid or alkali cleaning agents.

Hot-Dip Galvanised Steel

For general cleaning of bulk contaminants such as dirt and the like, ordinary laundry soaps can be satisfactorily used.

For more stubborn or larger areas, the use of a low-pressure wash (eg. a gurney gun) with just pure water or in conjunction with proprietary cleaning materials, such as car wash or truck wash, can be effective. It is important that the steel be washed down with fresh water after cleaning.

The cleaning treatment of the galvanising should be conservative at first and then if the situation demands, the treatment can become steadily more aggressive. Also, wherever some form of mechanical abrasion or “scrubbing” is required, the use of a hard, plastic bristle brush is recommended. Steel bristle brushes are not to be used since they will cause discolouration.

Mechanical methods of cleaning zinc surfaces can cause aesthetic issues. The “cleaned” areas are likely to contrast with adjacent untreated surfaces and may take a significant period of time to weather to a uniform colour. If aesthetics is a large concern, it is advisable to first test the cleaning method in an inconspicuous area in case the aesthetic effect is unappealing.

AVENUE PLATFORM SEAT

Seating » Seats

Customisable	As this item is made to order locally, custom lengths are available on request.
Additional Comments	Hardwood is treated with a UV-resistant oil finish.
