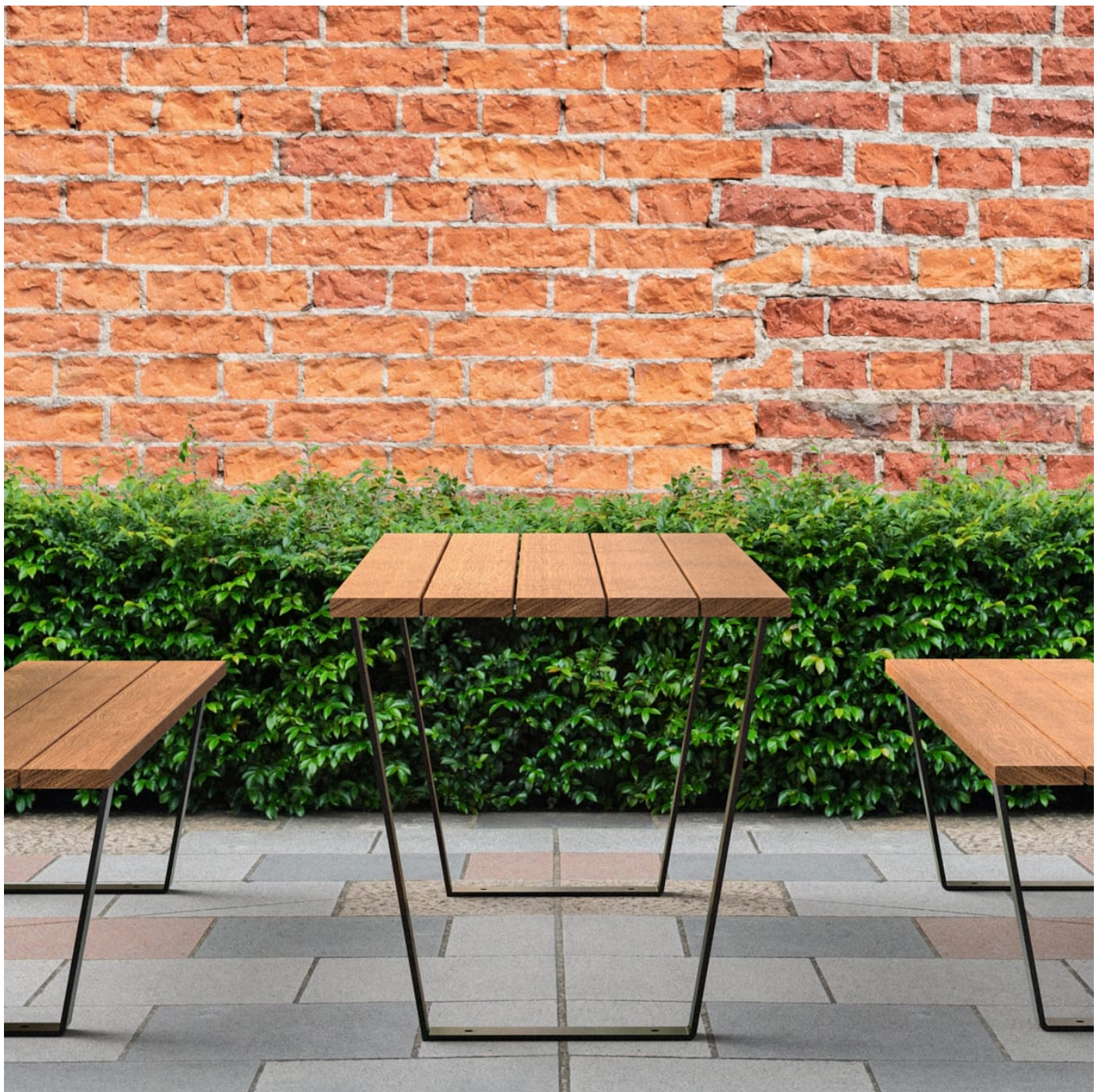


# AVENUE TABLE

Tables » Dining Height Tables



Collection: **Avenue**

Designed by: **Botton + Gardiner**

# AVENUE TABLE

Tables » Dining Height Tables



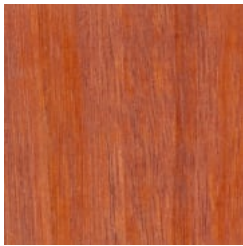
Hardwood Blackbutt  
UV-Resistant Oil



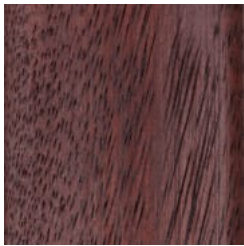
Hardwood Spotted  
Gum UV-Resistant  
Oil



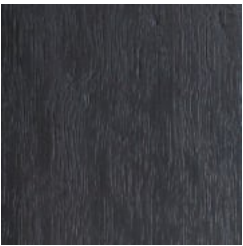
Hardwood Merbau  
UV-Resistant Oil



Hardwood Mixed Red  
UV-Resistant Oil  
Clear



Hardwood Mixed Red  
UV-Resistant Oil  
Mahogany



Hardwood Mixed Red  
UV-Resistant Oil  
Ebony



Duraslat™ XG Ravine



Duraslat™ XG Cave



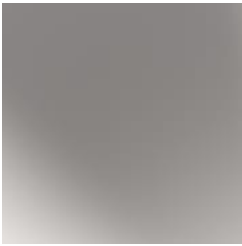
Duraslat™ XG Alcove



Duraslat™ XG  
Boulder



Duraslat™ XG Dune



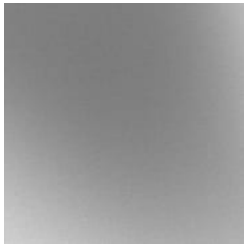
Clear Anodised  
Aluminium



Alugrain Driftwood



Alugrain Spotted  
Gum



Galvanised Steel



Core Powder-Coat  
White Satin



Core Powder-Coat  
Black Satin



Core Powder-Coat  
Charcoal Satin



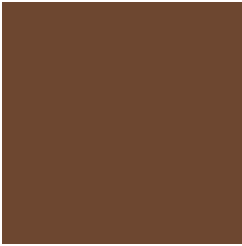
Core Powder-Coat  
Palladium Silver Satin



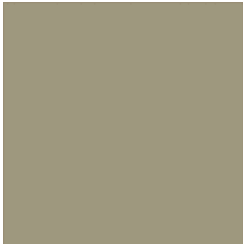
Core Powder-Coat  
Matt Black Matt



Core Powder-Coat  
Pearl White Gloss



Solid Powder-Coat  
Coffee Satin



Solid Powder-Coat  
Cove Satin



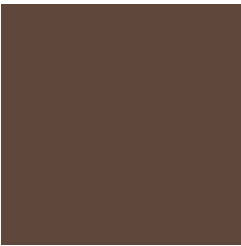
Solid Powder-Coat  
Monument Matt



Solid Powder-Coat  
Medium Bronze  
Kinetic Flat

# AVENUE TABLE

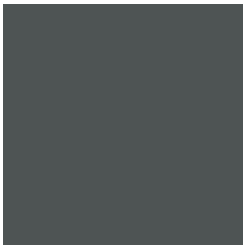
Tables » Dining Height Tables



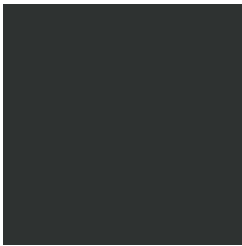
Textured Powder-Coat Core Ten  
Textured Metallic



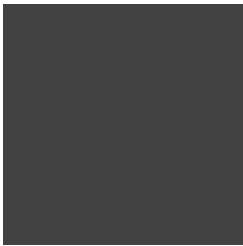
Textured Powder-Coat Asteroid  
Textured Metallic



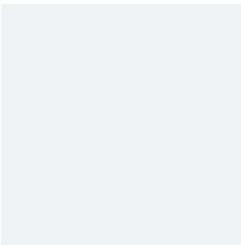
Textured Powder-Coat Bass Textured  
Metallic



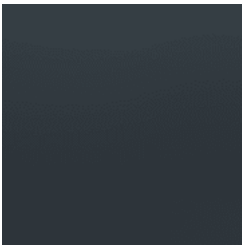
Textured Powder-Coat Textura Black



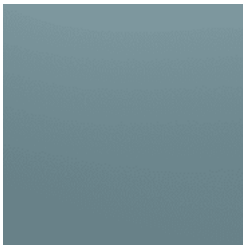
Textured Powder-Coat Textura  
Monument



Textured Powder-Coat Textura White



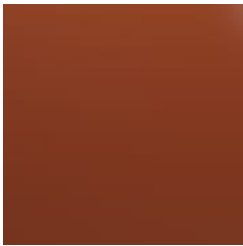
Signature Powder-Coat Deep Ocean  
Satin



Signature Powder-Coat Wedgewood  
Satin



Signature Powder-Coat Mangrove Satin



Signature Powder-Coat Territory Red  
Satin



Signature Powder-Coat Claypot Satin



Signature Powder-Coat Paperbark Satin



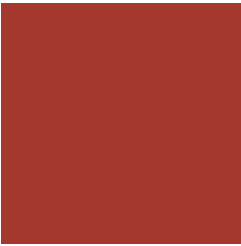
Bold Powder-Coat Bondi Blue Gloss



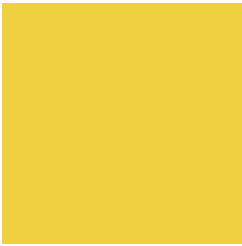
Bold Powder-Coat Leaf Satin



Bold Powder-Coat Sensation Gloss



Bold Powder-Coat Lobster Satin



Bold Powder-Coat Moonlight Satin



# AVENUE TABLE

Tables » Dining Height Tables



Minimalist table design. Hardwood, Duraslat™ XG and aluminium battens with a tapered steel frame in 27 powder-coat or galvanised finishes.

Description	Rectangular battens and a tapered steel frame combine to deliver a modern table design that takes its cues from 20th century industrial design. The functional feel and light appearance of the Avenue table complements and sits within most public spaces. Finishes include 5 hardwood, 5 Duraslat™ XG and 3 aluminium batten colours and 27 powder-coat finishes or a galvanised finish.
-------------	---

Made In	Australia
---------	-----------

Dimensions	Hardwood 1800mmW x 720mmD x 720mmH
	Duraslat™ XG 1600mmW x 720mmD x 720mmH
	Aluminium   Alugrain 2000mmW x 720mmD x 720mmH

# AVENUE TABLE

Tables » Dining Height Tables

Batten Type	<p>Hardwood Blackbutt, Spotted Gum, Mixed Red - Clear, Mahogany, Ebony Oil</p> <p>Duraslat™ XG Ravine, Cave, Alcove, Boulder, Dune</p> <p>Aluminium   Alugrain Clear Anodised, Driftwood, Spotted Gum</p>
Frame	<p>Powder-coated steel or hot-dip galvanised steel.</p> <p>Optional 316 stainless steel in matt textured frame finish available on request.</p>
Powder Coat	<p>Core White (satin), Black (satin), Charcoal (satin), Palladium Silver (satin), Matt Black (matt), Pearl White (gloss)</p> <p>Solid Coffee (satin), Cove (satin), Monument (matt), Medium Bronze Kinetic (flat)</p> <p>Textured Core Ten (textured metallic), Asteroid (textured metallic), Bass (textured metallic), Textura Black (textured), Textura Monument (textured), Textura White (textured)</p> <p>Signature Deep Ocean (satin), Wedgewood (satin), Mangrove (satin), Territory Red (matt), Claypot (satin), Paperbark (satin)</p> <p>Bold Bondi Blue (gloss), Leaf (satin), Sensation (gloss), Lobster (satin), Moonlight (satin)</p>
Sustainability	<p>Certified Hardwood All hardwood is sourced from sustainable forests certified by the Program for the Endorsement of Forest Certification (PEFC), the world's largest forestry certification system.</p> <p>Recycled Materials We locally source our steel. It means we know it uses recycled content and is 100% recyclable.</p> <p>Duraslat™ XG is made from 90% of recycled hardwood fibres and reclaimed plastic materials, which reduces demand for virgin materials.</p> <p>Low Pollutants Our powder-coating process doesn't emit Volatile Organic Compounds (VOCs) and has Environmental Product Declarations (EPDs).</p>

# AVENUE TABLE

Tables » Dining Height Tables

Warranty 5-year warranty. View the [warranty](#) for more details.

Lead Time 6-8 weeks

Assembly & Delivery Shipped fully assembled on pallets.

Fixing Detail Surface or sub-surface fixed by others. Anchors not included. Shims available for sub-surface fixing on request.

How to Specify  
Select your length  
Select your batten finish  
Select your frame finish  
Select your fixing type

# AVENUE TABLE

Tables » Dining Height Tables

---

## Care Instructions

### Hardwood

#### Cleaning

Remove any loose surface deposits with a soft bristled brush and wipe down with fresh water and a non-abrasive cloth.

#### Oiling

Oiling of timber will postpone natural greying, repel moisture, improve mould resistance, help maintain a smooth surface texture and enhance the grain and colour.

To maintain, lightly sand rough areas of timber and brush on one coat of timber decking oil every 6 months or as required.

### Duraslat™ XG

#### Cleaning

Simply wash down occasionally. Do not use high pressure cleaners.

### Powder-Coat

#### Cleaning

Carefully remove any loose surface deposits with a wet sponge or soft bristled brush.

Use a soft (non-abrasive) cloth or brush and a diluted solution of mild detergent and warm water.

Ensure surfaces are thoroughly rinsed with clean fresh water after cleaning to remove all residues.

Never use thinners, abrasive cleaning agents, alcohol-based, acid or alkali cleaning agents.

### Hot-Dip Galvanised Steel

For general cleaning of bulk contaminants such as dirt and the like, ordinary laundry soaps can be satisfactorily used.

For more stubborn or larger areas, the use of a low-pressure wash (eg. a gurney gun) with just pure water or in conjunction with proprietary cleaning materials, such as car wash or truck wash, can be effective. It is important that the steel be washed down with fresh water after cleaning.

The cleaning treatment of the galvanising should be conservative at first and then if the situation demands, the treatment can become steadily more aggressive. Also, wherever some form of mechanical abrasion or “scrubbing” is required, the use of a hard, plastic bristle brush is recommended. Steel bristle brushes are not to be used since they will cause discolouration.

Mechanical methods of cleaning zinc surfaces can cause aesthetic issues. The “cleaned” areas are likely to contrast with adjacent untreated surfaces and may take a significant period of time to weather to a uniform colour. If aesthetics is a large concern, it is advisable to first test the cleaning method in an inconspicuous area in case the aesthetic effect is unappealing.

# AVENUE TABLE

Tables » Dining Height Tables

Customisable	As this item is made to order locally, custom lengths are available on request.
Additional Comments	Hardwood is treated with a UV-resistant oil finish. As this item is made to order locally the frame can be customised with extra supports, decorative elements, squared off and more.